



IONIQ

Hybrid · Plug-in Hybrid · Electric





NEW THINKING. NEW POSSIBILITIES.

Our philosophy is to do things differently and embrace every challenge. Right now, one of the biggest responsibilities facing every manufacturer is to move away from fossil fuels towards a more sustainable way of driving. Our vision for e-mobility is pointing us towards increasingly pioneering designs and materials, while our focus on innovation underpins our entire purpose. It's inspired us to produce low-emission vehicles such as ix35 Fuel Cell, featuring ambitious technologies that are becoming more widely used every day. It's also led us to our latest achievement — becoming the first manufacturer to produce a car that features three different electrified powertrains under the same design. This feat is only the start of our vision for the future.



Introducing the
Hyundai IONIQ, the
world's first car with
three different electrified
powertrains. Designed
for performance and
efficiency, while keeping
your lifestyle in mind.



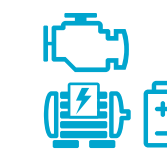
To get the full experience, download the IONIQ 3D app to your Apple® or Android™ device.
Once downloaded, simply scan the front cover and interact with the stunning IONIQ.





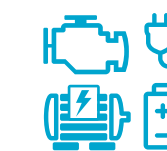
The first car in the world to feature three electrified powertrains.

The unique choice of three electrified powertrains in one model gives the Hyundai IONIQ a very special status. As a ground-breaking achievement, the focus is on combining efficiency, low emissions and outstanding performance. From start/stop city driving to long-distance trips, the IONIQ provides the perfect option for a variety of lifestyles.



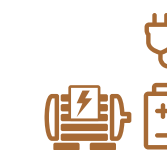
IONIQ Hybrid

The IONIQ Hybrid's electric motor works together with the petrol engine when you pull away or come to a standstill. It smoothly improves fuel consumption and lowers emissions in start/stop city driving, while providing an extra kick of power and torque if required.



IONIQ Plug-in Hybrid

The IONIQ Plug-in Hybrid can travel up to 30 miles on electric power, which covers most day-to-day trips. On longer trips, the electric motor works intelligently with the petrol engine to improve fuel economy and reduce CO₂ emissions, or offer more performance. Coming in Summer 2017.



IONIQ Electric

For pure, zero-emission driving, the fully electric powertrain is this model's trump card. Delivering a significant 120PS, its battery gives you over 130 miles of real-world range. Just as impressively, you can charge it to 80% in just 30 minutes.



reddot award
design concept

A pioneering design concept that combines form with function.

The IONIQ's streamlined exterior creates far more than a striking, coupé-style silhouette. It creates an aerodynamic form that improves every aspect of efficiency.



Sleek and attractive, the IONIQ makes a powerful first impression. However, it's the detail that's gone into its exterior that makes it a real game-changer. Whatever your perspective, the elegant lights draw the eye with their curved outline, seamlessly integrated into the car's profile. The side sill mouldings keep air close to its body, while the front wheel air curtains redirect turbulent air. The beautiful

sloping fast-back style roofline enhances the airflow even further, adding to a clean, stylish design that's built around aerodynamic performance. It's the reason that the IONIQ won the coveted 2016 Red Dot Award for outstanding design in the 'Vehicle' category. Judged by industry experts from around the world, Red Dot rewards ground-breaking innovations across a huge range of sectors.



Car shown IONIQ Electric Premium SE in Polar White solid paint.



The IONIQ Hybrid: a driving experience with no compromises.

The IONIQ Hybrid combines technology with power to deliver a smooth driving experience. The electric motor and engine work seamlessly together to deliver plenty of torque when you need it most and maximum efficiency when cruising or at low speed.

The impressive Dual Clutch Transmission (DCT) places the IONIQ Hybrid truly at the forefront of innovation, delivering a smooth ride for a truly enjoyable driving experience. It works with one clutch operating odd-numbered gears and the other operating even-numbered gears, giving you faster responsiveness and a more dynamic overall experience. There are two driving modes to suit your style, including SPORT mode, which combines electric and

engine power resulting in more weight to the steering for a reactive and thrilling drive. ECO mode optimises fuel economy and efficiency for a different style of driving. When you're decelerating, the engine is turned off and the kinetic energy from the brakes is converted into electrical energy that's stored in the battery. Whichever option you select, you'll enjoy an experience that rivals any car in its class, not just Hybrids.



6-speed Dual Clutch Transmission

The IONIQ Electric: zero tailpipe emissions, maximum enjoyment.

With impressive customisation on offer, the electric experience will surpass your expectations. Take it for a spin and admire its performance attributes on the open road.

Packed with leading-edge features and options, the innovative IONIQ Electric arrives with flexible selections to suit your style. SPORT mode provides you with a significant boost by increasing your torque from 265Nm to 295Nm, delivering an extra burst of acceleration. The IONIQ Electric also utilises regenerative braking to great effect, charging your battery while you're on the move. Steering-mounted paddles allow you to adjust the regenerative braking strength. By clicking the left

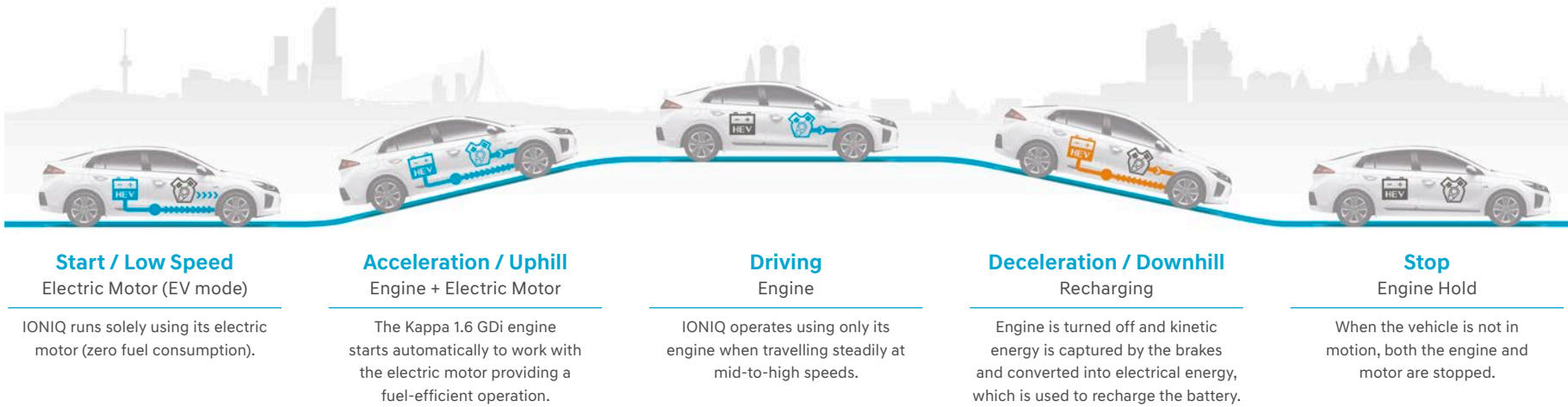
hand paddle, you'll increase the regenerative braking effect to put more power in the battery while maximising efficiency. Click the right-hand paddle to decrease the regenerative braking effect for a more refined experience. Customisation of drive modes is made easy through the 8" touchscreen allowing you to adjust the maximum speed, climate control and the level of regenerative braking. With 120PS available and a real world range of more than 130 miles*, the IONIQ Electric rises to every challenge.





Efficient and energetic, IONIQ Hybrid arrives with power in all the right places.

Cutting-edge technology powers the IONIQ, maximising all available energy to deliver the optimum drive. Its outstanding performance is down to the ambition and ingenuity of our engineers, who have pushed the boundaries in delivering a car that excels on every level.



The epitome of forward-thinking motoring, the 1.6-litre GDi direct-injection petrol engine in the IONIQ Hybrid and Plug-in Hybrid is intelligently designed to work with the electric motor to deliver maximum power and economy. As the latest evolution of our 16-valve Kappa design, it works by keeping the intake valves open for longer than a traditional combustion engine, reducing the compression ratio in the process. This makes it more fuel efficient and works perfectly on the hybrid, where engine torque can be boosted instantly by the electric motor. We've utilised friction-reducing roller bearings, low-viscosity oil and a Cooled Exhaust Gas Recirculation (ECR) system to optimise heat recovery and produce a design that boosts thermal efficiency by 40%. By using innovative technology, such as rectangular section copper wire and internal core components that are up to 10% thinner than normal, it delivers in excess of 95% efficiency. In simple terms, it means that the energy is used almost solely to power the vehicle, rather than being lost on the way. The result is instantly available torque that creates smooth acceleration and a truly agile driving experience that surpasses other cars in its class.

Images shown reference examples of various driving scenarios. The performance of the Hybrid System is influenced by the driving style, the state of charge of the high voltage battery, the route, the weather condition, the weight of the cargo and other external factors.

Car shown IONIQ Hybrid Premium SE in Polar White solid paint.

Lightweight, aerodynamic and electrified. It's efficient in every way.

With the clever integration of an electric motor, it should be obvious that the IONIQ is built with economy in mind. However, there is so much more that adds to its efficiency, from its aerodynamic form to the lightweight materials we used. It really is all in the detail.

A sleek, smooth silhouette is more than just a design style; it's a scientifically developed form that creates an incredible drag co-efficient (Cd) of just 0.24. With cleaner airflow on every aspect, including the wheels and side sill mouldings, less power is required to propel the car forward, resulting in fewer emissions. Crucial to efficiency is the car's weight — or rather lack of it. Selected body panels, such as the bonnet

and tailgate, are made of aluminium to decrease both their own weight, and the IONIQ's overall kerb weight. The bonnet is 6.5kg (46%) lighter than its steel equivalent, while the tailgate is 6.1kg (45%) lighter. This 12.6kg saving comes with no compromise on noise or vibration. It's these small gains that contribute to the bigger picture: an extremely lightweight, efficient model in every way.





The IONIQ's interior is designed around the philosophy of clean simplicity.

With elements that cleverly lift and highlight key features, the interior represents continuous evolution with the latest designs, showcasing an ergonomic, simple layout.

As forward-thinking as the rest of the car, its fine touches bring all the key elements to life in a fluid and elegant manner. At the heart of it all sits a D-cut steering wheel with chrome spokes that bring an air of sportiness to the design. Continuing the theme are the chrome-accented gear knob and footrests which add to its modernist luxury feel. On the IONIQ Hybrid and Plug-in Hybrid, thin blue lines feature on

the dashboard and instrument cluster, while copper-coloured accents in the IONIQ Electric bring that live-wire feel to the inside. Memory function driver's seat and heated front and rear seats arrive on top-spec models, while soft-touch materials add to the feel of premium quality that runs throughout the DNA of the interior design. It even features thicker glass to keep noise pollution down to a minimum.

In a connected world, everything's at your fingertips.

As a contemporary car in every way, the IONIQ places connectivity right at its heart. With LIVE Services, interconnected music and a surround-sound speaker system, its abundance of technological capabilities will elevate your journey to the next level.



Designed with your lifestyle in mind, the IONIQ ensures that you can take a trip and always stay connected. When it comes to accessing your music safely and easily, you'll have an impressive level of choice on the Premium and Premium SE, thanks to Bluetooth®, Apple CarPlay™ and Android™ Auto. You can create a perfect synergy between your life on and off the road by utilising the selected apps on compatible Apple and Android phones. Bluetooth connectivity helps you stay connected with friends and family, and you don't need to worry about your battery running out on a call thanks to the wireless smartphone charging facility which is both simple to use

and extremely useful. The IONIQ's satellite-navigation system will make it hard to take a wrong turn. It comes with a 7-year free subscription to LIVE Services for up-to-the-minute weather, traffic and speed camera updates, and even specific searches to help you locate local points of interest. High-definition Clari-Fi technology restores digitally repressed sound, while there's an Infinity premium surround-sound system with eight speakers, subwoofer and external amplifier on Premium SE. Finally, important driving information such as charge level is displayed on a 7" TFT instrument cluster and 8" touchscreen with a pin-sharp pixel resolution.



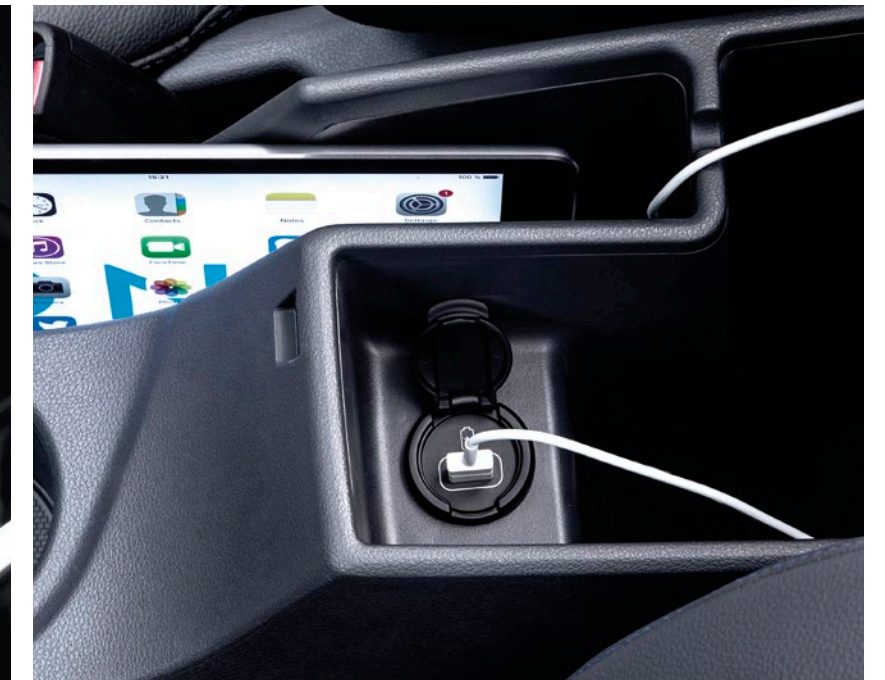
8" touchscreen infotainment unit (fitted as standard on Premium and Premium SE trims).



Infinity high-definition sound system (fitted as standard on Premium and Premium SE trims).



Wireless charging (compatible smartphone required) (fitted as standard on Premium and Premium SE trims).



USB charging port and tablet storage (fitted as standard on all trims).



Lane Departure Warning System with Lane Keep Assist (LKAS)*



Autonomous Emergency Braking (AEB)*



Smart Adaptive Cruise Control (SCC)*



Blind Spot Detection System (BSD)*

Its extra-sensory technologies help keep you safe.

The IONIQ's safety features befit such an advanced model. A combination of advanced technologies and preventative innovations help keep you on track.



The IONIQ arrives with 7 airbags along with a significant line-up of driver assist technologies. The Lane Departure Warning System with Lane Keep Assist will warn you if you veer out of your lane and apply corrective steering if necessary. The Autonomous Emergency Braking function helps prevent collisions with pedestrians or vehicles by emitting a visual and audible warning,

before intervening with partial or complete brake application. Rear radar sensors provide Blind Spot Detection to help you change lanes or safely reverse, while Smart Adaptive Cruise Control maintains a safe distance between you and the preceding vehicle. This cutting-edge combination of built-in radar, cameras and sensors will look out for you every step of the way.





Recharge at home or on the move.

With all the economic benefits that come with electric power, possibly one of the most important efficiencies is the speed and ease at which the battery charges. You'll benefit from charge scheduling, where you can choose to charge immediately or set a departure time so the IONIQ can prepare the car with maximum efficiency.



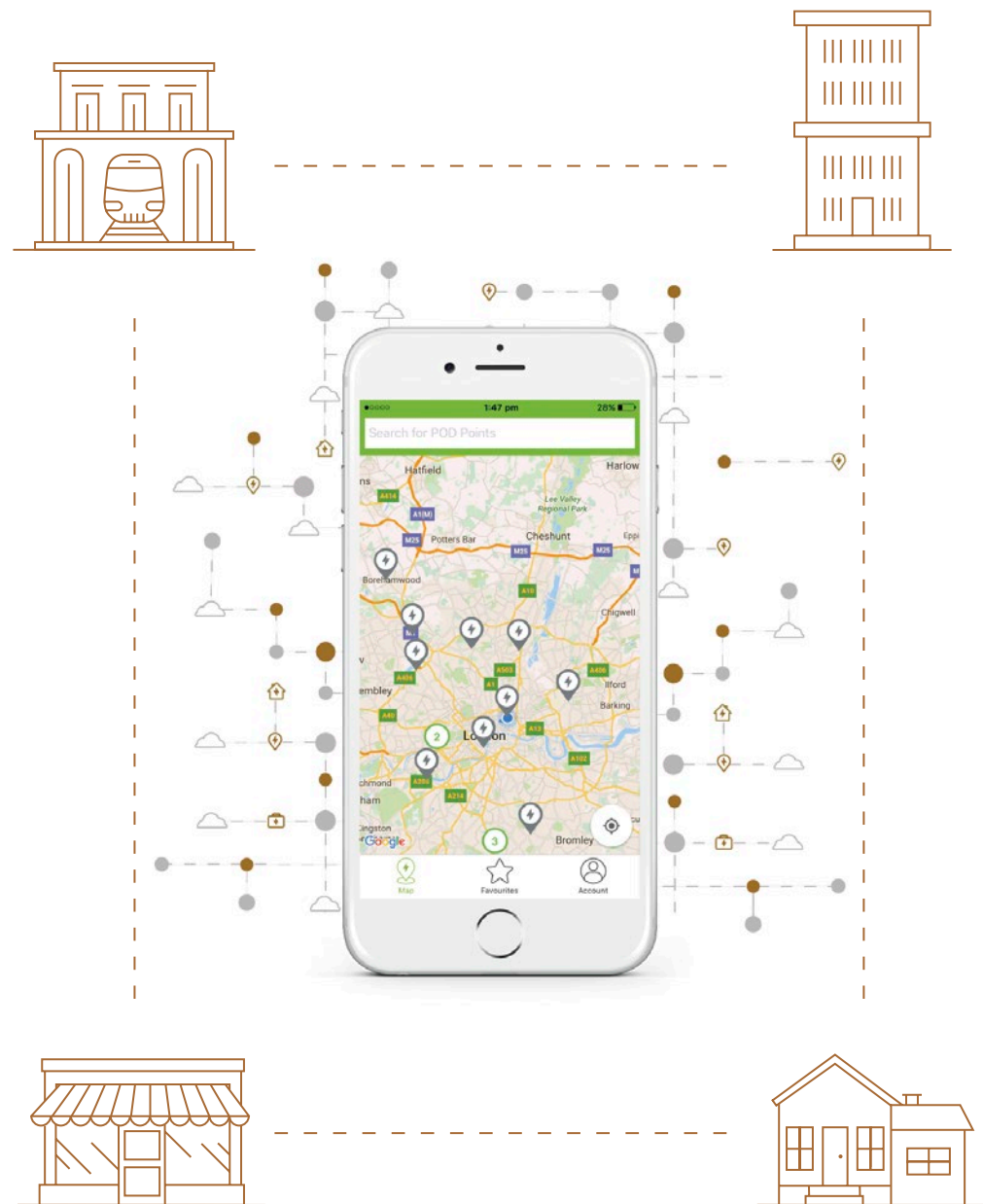
The IONIQ Electric is designed to impress, especially when it comes to its battery life and charging speed. The 6.6kW on-board charger will support faster, efficient charging, taking just 4 hours 25 minutes from empty to 100% charge using a 7kW wallbox. On the move, DC rapid chargers will allow you to charge up to 80% in as little as 30 minutes. The inbuilt heating system improves the process, saving the high voltage charge for driving, especially in cold conditions. Three LEDs on the top of the dashboard gradually light up when it's successfully plugged in so you can check its charging status from outside.

Charging to fit your lifestyle.

Charging your IONIQ Plug-in Hybrid or Electric will very quickly become a part of your routine. When you're out and about, you'll have a huge variety of charging points at your disposal. Whether you're at the train station or taking a trip to the shops, you'll be able to recharge your car in keeping with your lifestyle.

Just visit the zap-map website for a detailed look at all the charging points closest to you. For charging at home, we've selected POD Point as our preferred supplier. We're delighted to have a partner who will provide a high quality of service at all times.

Learn more at:
www.pod-point.com
www.zap-map.com/live



Charging on-the-move



CCS Combo

Charging speed: Rapid
Connection to car: CCS Combo
Output connection: CCS Combo
Estimated charge times:
 50 kW: approx. 30 min
 (to 80% of the charge)
Rating: Varies from manufacturer to manufacturer. Not supplied by HMUK.



7-Pin Type 2

Charging speed: Normal
Connection to car: Type 2
Output connection: Type 2
Estimated charge times:
 Approx. 4 hours 25 minutes
 (to fully charge, 100%)
Rating: 240V/32A/7kW

Charging at home



7-Pin Type 2

Charging speed: Normal
Connection to car: Type 2
Output connection: Type 2
Estimated charge times:
 Approx. 4 hours 25 minutes
 (to fully charge, 100%)
Rating: 240V/32A/7kW



In-Car Control Box (ICCB)

Charging speed: Trickle / Slow
Connection to car: Type 2
Output connection: 3 Pin Plug
Estimated charge times:
 Approx. 12 hours
 (to fully charge, 100%)
Rating: 230V/10A/2.3kW



Hybrid SE OFFERS THE FOLLOWING FEATURES AS STANDARD:

- 15" Alloy Wheels with Aerodynamic Wheel Trims
- Air Conditioning – Dual Zone Climate Control
- Automatic Headlights with Dusk Sensor
- Autonomous Emergency Braking (AEB)
- Bluetooth® Connectivity
- Cruise Control – Smart Adaptive Speed Control
- Driver's Seat – Lumbar Support (electric)
- Driver's Supervision Instrument Cluster with TFT Display (4.2")
- Hill-start Assist Control (HAC)
- Lane Departure Warning System with Lane Keep Assist (LKAS)
- Leather Wrapped Steering Wheel
- Parking Sensors – Rear
- Parking System – Rear Camera and Guidance System
- Radio, RDS, DAB
- Seat Trim – Cloth
- Spare Wheel – Emergency Space Saver (steel)
- Speakers – 2 Tweeters, 2 Front, 2 Rear
- Touchscreen Media Centre (5")
- Tyre Pressure Monitoring System (TPMS) with Individual Tyre Pressure Display
- USB and Aux Connections – Front

Hybrid Premium OFFERS THE FOLLOWING FEATURES OVER HYBRID SE:

- Automatic Dimming Rear View Mirror
- Door Mirror Puddle Lights
- Door Mirrors – Power Folding
- Driver's Seat – Heated
- Driver's Supervision Instrument Cluster with TFT Display (7")
- Front Passenger's Seat – Heated
- Headlights – Bi-Xenon
- Phone Connection – Android™ Auto
- Phone Connection – Apple CarPlay™
- Smart Key – Keyless Entry with Engine Start/Stop Button
- Speakers – Upgraded Infinity Sound System: 1 Centre, 2 Tweeters, 2 Front, 2 Rear, 1 Subwoofer and 1 Ext Amp
- Steering Wheel – Heated
- Touchscreen Satellite Navigation (8") including Traffic Messaging Channel, MapCare and LIVE Services
- USB – Driver's Arm Rest (charging only)
- Wireless Phone Charging Pad



17" alloy wheels optional

Hybrid Premium SE OFFERS THE FOLLOWING FEATURES OVER HYBRID PREMIUM:

- Alloy Pedals
- Automatic De-fog System for Front Windscreen
- Automatic Windscreen Wipers with Rain Sensor
- Blind Spot Detection System (BSD)
- Driver's Seat - Electric Adjustments
- Driver's Seat - Memory Function
- Driver's Seat - Ventilated
- Front Passenger's Seat - Ventilated
- Parking Sensors - Front and Rear
- Rear Cross Traffic Alert (RCTA)
- Rear Seats (outer) - Heated
- Seat Trim - Leather (seat facings only)



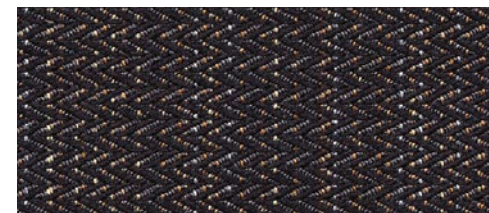
Electric Premium OFFERS THE FOLLOWING FEATURES AS STANDARD:

- 16" Alloy Wheels
- Air Conditioning - Single Zone Climate Control
- Automatic Headlights with Dusk Sensor
- Automatic Windscreen Wipers with Rain Sensor
- Autonomous Emergency Braking (AEB)
- Bluetooth® Connectivity
- CCS Combo Rapid Charge Port (50kW)
- Charging Cable – 7 pin type 2
- Charging Cable – Emergency 3 Pin Connector (ICCB)
- Cruise Control – Smart Adaptive Speed Control with Stop and Go Function
- Driver's Seat – Heated
- Driver's Seat – Lumbar Support (electric)
- Driver's Supervision Instrument Cluster with TFT Display (7")
- Front Passenger's Seat – Heated
- Headlights – LED
- Hill-start Assist Control (HAC)
- Lane Departure Warning System with Lane Keep Assist (LKAS)
- Leather Wrapped Steering Wheel
- Parking Sensors – Rear
- Parking System – Rear Camera and Guidance System
- Phone Connection – Android™ Auto
- Phone Connection – Apple CarPlay™
- Radio, RDS, DAB
- Regenerative Brake Shift Paddles
- Seat Trim – Cloth
- Smart Key – Keyless Entry with Engine Start/Stop Button
- Speakers – Upgraded Infinity Sound System: 1 Centre, 2 Tweeters, 2 Front, 2 Rear, 1 Subwoofer and 1 Ext Amp
- Steering Wheel – Heated
- Touchscreen Satellite Navigation (8") including Traffic Messaging Channel, MapCare and LIVE Services
- Tyre Pressure Monitoring System (TPMS) with Individual Tyre Pressure Display
- USB and Aux Connections – Front
- Wireless Phone Charging Pad

Electric Premium SE OFFERS THE FOLLOWING FEATURES OVER ELECTRIC PREMIUM:

- Alloy Pedals
- Blind Spot Detection System (BSD)
- Driver's Seat – Electric Adjustments
- Driver's Seat – Memory Function
- Driver's Seat – Ventilated
- Front Passenger's Seat – Ventilated
- Parking Sensors – Front and Rear
- Rear Cross Traffic Alert (RCTA)
- Rear Seats (outer) – Heated
- Seat Trim – Leather (seat facings only)

Blue trim
IONIQ Hybrid



Leather trim with Blue stitching features on Premium SE

Cloth trim features on SE and Premium models

Copper trim
IONIQ Electric



Leather trim with Copper stitching features on Premium SE

Cloth trim features on Premium



Polar White - Solid



Platinum Silver - Metallic



Phoenix Orange - Metallic



Iron Grey - Metallic



Phantom Black - Pearl



Marina Blue - Metallic



Demitasse Brown - Metallic



Polar White - Solid



Phoenix Orange - Metallic



Platinum Silver - Metallic



Phantom Black - Pearl



Marina Blue - Metallic



Blazing Yellow - Metallic

	Hybrid			Electric	
	SE	Premium	Premium SE	Premium	Premium SE
ENGINE & TRANSMISSION					
Hybrid: 1.6 GDi engine + 32kW Electric Motor (141PS) 6 Speed Dual Clutch Transmission	●	●	●	-	-
Electric: 28kWh Battery + 88kW Electric Motor (120PS)	-	-	-	●	●
EXTERIOR					
15" Alloy Wheels with Aerodynamic Wheel Trims	●	●	●	-	-
16" Alloy Wheels (Electric Type)	-	-	-	●	●
17" Alloy Wheels	-	-	○	-	-
Bumper Accents*	●	●	●	●	●
Door Mirrors - Body Coloured	●	●	●	●	●
Exterior Door Handles - Body Coloured	●	-	-	-	-
Exterior Door Handles - Body Coloured with Chrome Insert	-	●	●	●	●
Radiator Grille - Active Air Flap	●	●	●	-	-
Radiator Grille - Gloss Black with Chrome Inserts*	●	●	●	-	-
Radiator Grille - True Grey Dedicated Grille*	-	-	-	●	●
Rear Bumper - Two-Tone*	●	●	●	●	●
Rear Spoiler with Integrated LED Brake Light	●	●	●	●	●
Side Body Moulding	●	●	●	●	●
Window Surround - Black	●	-	-	-	-
Window Surround - Chrome Finish	-	●	●	●	●
INTERIOR					
Alloy Pedals	-	-	●	-	●
Door Scuff - Standard Plate	●	-	-	-	-
Door Scuff - Chrome with IONIQ logo	-	●	●	●	●
Interior Colour-coded Seat and Trim Accents*	●	●	●	●	●

	Hybrid			Electric	
	SE	Premium	Premium SE	Premium	Premium SE
Interior Door Handles - Black	●	-	-	-	-
Interior Door Handles - Chrome Effect	-	●	●	●	●
Leather Wrapped Steering Wheel	●	●	●	●	●
SEATING					
Driver's Seat - Heated	-	●	●	●	●
Driver's Seat - Ventilated	-	-	●	-	●
Driver's Seat - Electric Adjustments	-	-	●	-	●
Driver's Seat - Manual Adjustments	●	●	-	●	-
Driver's Seat - Lumbar Support (Electric)	●	●	●	●	●
Driver's Seat - Memory Function	-	-	●	-	●
Front Passenger's Seat - Heated	-	●	●	●	●
Front Passenger's Seat - Ventilated	-	-	●	-	●
Front Passenger's Seat Height Adjustment (Manual)	●	●	●	●	●
Head Restraints - Vertical and Horizontal Adjustment (Front)	●	●	●	●	●
Head Restraints - Vertical Adjustment (Rear)	●	●	●	●	●
Rear Seats - Split Folding 60/40	●	●	●	●	●
Rear Seats (Outer) - Heated	-	-	●	-	●
Seat Trim - Cloth	●	●	-	●	-
Seat Trim - Leather - Seat Facings Only	-	-	●	-	●
VENTILATION & VISIBILITY					
Air Conditioning - Driver-only Mode	●	●	●	●	●
Air Conditioning - Dual Zone Climate Control	●	●	●	-	-
Air Conditioning - Single Zone Climate Control	-	-	-	●	●
Automatic De-Fog System for Front Windscreen	-	-	●	●	●

	Hybrid			Electric	
	SE	Premium	Premium SE	Premium	Premium SE
Automatic-Dimming Rear View Mirror	-	●	●	●	●
Automatic Headlights with Dusk Sensor	●	●	●	●	●
Automatic Windscreen Wipers with Rain Sensor	-	-	●	●	●
Daytime Running Lights - LED	●	●	●	●	●
Door Mirror Puddle Lights	-	●	●	●	●
Fog Lights - LED Rear	●	●	●	●	●
Headlight - Bi-Xenon	-	●	●	-	-
Headlight - Halogen	●	-	-	-	-
Headlight - LED	-	-	-	●	●
Indicator Lights - Door Mirror (LED)	●	●	●	●	●
Interior Light - Centre	●	●	●	●	●
Interior Light - Luggage Compartment	●	●	●	●	●
Interior Light - Map-Reading Light	●	●	●	●	●
Positioning Lights - LED	-	●	●	●	●
Rear Air Vents - Centre Console	-	●	●	●	●
Rear Light - LED	-	●	●	●	●
Rear Windscreen - Heated	●	●	●	●	●
Solar Glass with Windscreen Shade Band	●	●	●	●	●
CHARGING					
CCS Combo Rapid Charge Port (50kW)	-	-	-	●	●
Charging Cable - Emergency 3 Pin Connector (ICCB)	-	-	-	●	●
Charging Cable - 7 Pin Type 2	-	-	-	●	●
POD Point 7kW Home Charger	-	-	-	○	○

	Hybrid			Electric	
	SE	Premium	Premium SE	Premium	Premium SE
CONVENIENCE					
12V Power Outlet	●	●	●	●	●
Arm Rest - Front with Storage	●	●	●	●	●
Centre Console - Tablet Storage	●	●	●	●	●
Cruise Control - Smart Adaptive Speed Control	●	●	●	-	-
Cruise Control - Smart Adaptive Speed Control with Stop and Go Function	-	-	-	●	●
Cup Holders - Front	●	●	●	●	●
Door Mirrors - Electric Adjustment and Heated	●	●	●	●	●
Door Mirrors - Power Folding	-	●	●	●	●
Drive Mode Selector - Button	-	-	-	●	●
Drive Mode Selector - Gear Lever	●	●	●	-	-
Electric Power Steering with Variable Drive Modes	●	●	●	●	●
Electric Windows - Front and Rear	●	●	●	●	●
Electric Windows - Front with Anti-trap and One-touch Controls	●	●	●	●	●
Front Seat Back Pockets - Driver's Seat	●	●	●	●	●
Front Seat Back Pockets - Passenger's Seat	●	●	●	●	●
Luggage Net	●	●	●	●	●
Parking Brake - Electric with Auto Hold Function	-	-	-	●	●
Parking Brake - Foot	●	●	●	-	-
Parking Sensors - Front and Rear	-	-	●	-	●
Parking Sensors - Rear	●	●	-	●	-
Parking System - Rear Camera and Guidance System	●	●	●	●	●
Regenerative Brake Shift Paddles	-	-	-	●	●

	Hybrid			Electric	
	SE	Premium	Premium SE	Premium	Premium SE
Smart Key - Keyless Entry with Engine Start/Stop Button	-	•	•	•	•
Spare Wheel - Emergency Space Saver (Steel)	•	•	•	-	-
Steering Wheel - Heated	-	•	•	•	•
Sun Visors - with Driver and Passenger Illuminated Vanity Mirrors	•	•	•	•	•
Sunglasses Holder	•	•	•	•	•
Tyre Repair Kit	-	-	-	•	•
Windscreen Washer Fluid Sensor and Warning Indicator	•	•	•	•	•
TECHNOLOGY & ENTERTAINMENT					
Bluetooth® Connectivity¹	•	•	•	•	•
Driver's Supervision Instrument Cluster with TFT Display (4.2")	•	-	-	-	-
Driver's Supervision Instrument Cluster with TFT Display (7")	-	•	•	•	•
Phone Connection - Android™ Auto	-	•	•	•	•
Phone Connection - Apple CarPlay™	-	•	•	•	•
Radio, RDS, DAB	•	•	•	•	•
Speakers - 2 Tweeters, 2 Front, 2 Rear	•	-	-	-	-
Speakers - Upgraded Infinity Sound System - 1 Centre, 2 Tweeters, 2 Front, 2 Rear, 1 Subwoofer and 1 Ext. Amp	-	•	•	•	•
Steering Wheel Audio, Phone and Cruise Controls	•	•	•	•	•
Touchscreen Media Centre (5")	•	-	-	-	-
Touchscreen Satellite Navigation (8") including Traffic Messaging Channel, MapCare and LIVE Services¹	-	•	•	•	•
USB - Driver's Arm Rest (Charging Only)	-	•	•	•	•
USB and Aux Connections - Front	•	•	•	•	•
Wireless Phone Charging Pad	-	•	•	•	•
SAFETY & SECURITY					
Airbag - Front Passenger Deactivation Switch	•	•	•	•	•

	Hybrid			Electric	
	SE	Premium	Premium SE	Premium	Premium SE
Airbags - Front, Front Side, Curtain and Driver's Knee	•	•	•	•	•
Anti-Lock Brake System (ABS)	•	•	•	•	•
Autonomous Emergency Braking (AEB)	•	•	•	•	•
Blind Spot Detection System (BSD)	-	-	•	-	•
Central Locking - Remote	•	•	•	•	•
Deadlocking	•	•	•	•	•
Electronic Stability Control (ESC)	•	•	•	•	•
Hill-Start Assist Control (HAC)	•	•	•	•	•
Lane Departure Warning System with Lane Keep Assist (LKAS)	•	•	•	•	•
Rear Cross Traffic Alert (RCTA)	-	-	•	-	•
Tyre Pressure Monitoring System (TPMS) with Individual Tyre Pressure Display	•	•	•	•	•
CUSTOMER OPTIONS					
17" Alloy Wheels	-	-	○	-	-
Hyundai Sense Service Plans**	○	○	○	○	○
Metallic/Pearl Paint	○	○	○	○	○
POD Point 7kW Home Charger	-	-	-	○	○
WARRANTY¹¹					
100% MapCare Programme - 10 years of Map Updates	-	•	•	•	•
12 Years' Anti-Perforation Warranty	•	•	•	•	•
Five Year Unlimited Mileage Warranty Five Year Roadside Assistance Five Year Annual Vehicle Health Checks	•	•	•	•	•
IONIQ High Voltage Battery Warranty – 8 years, 125,000 miles	•	•	•	•	•

• Standard ○ Optional at extra cost
* Specification colour dependent on powertrain/exterior colour combination, please contact your local dealer for more information.
† Please contact your dealer for the latest list of compatible phones.
‡ LIVE Services includes a 7 year subscription. A compatible smartphone with data plan required to activate services. Please contact your dealer for full details.
** Hyundai Sense Service Plan full terms and conditions apply. Please see <http://www.hyundai.co.uk/hyundai-sense> or ask your local dealer for full terms and conditions.
†† 5 Year Unlimited Mileage Warranty terms and exclusions apply. Please see www.hyundai.co.uk or ask your local dealer for full terms and exclusions.
Apple CarPlay™ is a trademark of Apple, Inc. Android™ is a trademark of Google, Inc. Infinity® is a registered trademark of Harman International Industries, Inc. The Bluetooth® word mark and logos are registered trademarks owned by the Bluetooth SIG, Inc. and any use of such marks by Hyundai Motor UK Ltd is under license. Other trademarks and trade names are those of their respective owners.

	Hybrid (SE, Premium & Premium SE - 15" Wheels)	Hybrid (Premium SE with Optional 17" Wheels)	Electric (Premium & Premium SE)
	1.6 Petrol 141PS 6 Speed Automatic DCT	1.6 Petrol 141PS 6 Speed Automatic DCT	Electric Motor Single Speed Reduction Gear
HYBRID SYSTEM			
Max Hybrid System Output (kW/PS)	104 / 141 @ 5,700	104 / 141 @ 5,700	-
Max Hybrid System Output (Nm/lbs ft)	265 / 195 @ 4,000	265 / 195 @ 4,000	-
0-62mph (seconds)	10.8	11.1	-
Top speed (mph)	115	115	-
ENGINE			
Euro Status	Euro VI	Euro VI	-
Type	4 Cylinder DOHC - 16 valve	4 Cylinder DOHC - 16 valve	-
Displacement (cc)	1,580	1,580	-
Bore & stroke (mm)	72 x 97	72 x 97	-
Compression ratio	13:1	13:1	-
Max power (kW/PS)	77.2kW / 105 @ 5,700	77.2kW / 105 @ 5,700	-
Torque (Nm/lbs ft)	147/108 @ 4,000rpm	147/108 @ 4,000rpm	-
ELECTRIC MOTOR			
Electric Motor Type	Permanent Magnet Synchronous Motor (PMSM)	Permanent Magnet Synchronous Motor (PMSM)	Permanent Magnet Synchronous Motor (PMSM)
Electric Motor Max power (kW/PS)	32 / 43.5	32 / 43.5	88 / 120
Electric Motor Torque (Nm/lbs ft)	170 / 125	170 / 125	295 / 218
0-62mph (seconds)	-	-	9.9 (Sport mode) / 10.2 (Normal mode)
Top speed (mph)	-	-	103
HIGH VOLTAGE BATTERY			
Battery Type	Lithium-ion Polymer	Lithium-ion Polymer	Lithium-ion Polymer
Battery Power (kW)	42	42	98
Battery Capacity (kWh / Ah)	1.56 / 6.5	1.56 / 6.5	28 / 78
Voltage	240	240	360
CHARGING			
Charging Port	-	-	CCS Combo / Type 2
Estimated Charging Emergency 3 Pin Connector (ICCB) (95%)*	-	-	12 hours
Estimated Charging POD Point Wallbox 7kW (100%)*	-	-	4 Hours 25 minutes
Estimated Public 50kW CCS (80%)*	-	-	23 - 30 minutes
On Board Charger	-	-	6.6 kW

	Hybrid (SE, Premium & Premium SE - 15" Wheels)	Hybrid (Premium SE with Optional 17" Wheels)	Electric (Premium & Premium SE)
	1.6 Petrol 141PS 6 Speed Automatic DCT	1.6 Petrol 141PS 6 Speed Automatic DCT	Electric Motor Single Speed Reduction Gear
SUSPENSION			
Front / Rear	MacPherson Strut / Multi-link	MacPherson Strut / Multi-link	MacPherson Strut / Torsion Beam Type
STEERING			
System	Rack and Pinion Motor Driven Power Steering (C-MDPS)	Rack and Pinion Motor Driven Power Steering (C-MDPS)	Rack and Pinion Motor Driven Power Steering (C-MDPS)
Steering wheel lock to lock turns	2.66	2.66	2.66
Turning circle (metres)	10.6	10.6	10.6
BRAKES			
System	ABS System with Regenerative Brakes	ABS System with Regenerative Brakes	ABS System with Regenerative Brakes
Front / Rear	15" Disc / 14" Disc	15" Disc / 14" Disc	15" Disc / 15" Disc
TYRES			
SE, Premium and Premium SE	195/65 R15	-	205/55 R16
Premium SE (with Optional 17" wheels)	-	225/45 R17	-
WHEELS			
SE	6.0J X15 (alloy)	-	-
Premium	6.0J X15 (alloy)	-	6.5J X16 (alloy)
Premium SE	6.0J X15 (alloy)	-	6.5J X16 (alloy)
Premium SE (with Optional 17" wheels)	-	7.0J X17 (alloy)	-
DIMENSIONS			
Overall length (mm)	4,470	4,470	4,470
Overall width (mm) (Excluding Door Mirrors)	1,820	1,820	1,820
Overall height (mm)	1,450	1,450	1,450
Wheelbase (mm)	2,700	2,700	2,700
Track - front / Track - rear (mm)	1,563 / 1,577	1,549 / 1,563	1,555 / 1,564
WEIGHTS & CAPACITIES			
Luggage capacity VDA (litres) - seats up (Up to Load Cover)	443	443	350
Luggage capacity VDA (litres) - seats up (Up to Roof)	550	550	455
Luggage capacity VDA (litres) - seats down	1,505	1,505	1,410
Kerb Weight Lightest (kg) [†]	1,370	1,370	1,420
Kerb Weight Heaviest (kg) [†]	1,477	1,477	1,475
Payload (kg) [‡]	393 - 500	393 - 500	405 - 460

	Hybrid (SE, Premium & Premium SE - 15" Wheels)	Hybrid (Premium SE with Optional 17" Wheels)	Electric (Premium & Premium SE)
	1.6 Petrol 141PS 6 Speed Automatic DCT	1.6 Petrol 141PS 6 Speed Automatic DCT	Electric Motor Single Speed Reduction Gear
Gross vehicle weight (kg) ^{**}	1,870	1,870	1,880
Max tow weight (kg) Braked / Unbraked	Not Homologated	Not Homologated	Not Homologated
Gross train weight (kg) ^{††}	Not Homologated	Not Homologated	Not Homologated
Max roof weight (kg)	Not Homologated	Not Homologated	Not Homologated
Fuel tank capacity (litres)	45	45	N/A
FUEL CONSUMPTION & EMISSIONS			
Urban mpg (l/100km) ^{‡‡}	83.1(3.4)	72.7 (3.88)	N/A
Extra urban mpg (l/100km) ^{‡‡}	78.5 (3.6)	71.9 (3.92)	N/A
Combined mpg (l/100km) ^{‡‡}	83.1(3.4)	70.6 (4.00)	N/A
CO ₂ Emissions (g/km) ^{***}	79	92	N/A
RANGE & EMISSIONS			
Maximum Potential EV Driving Range (Miles/Km) ^{††}	-	-	174 / 280
Estimated Real EV Driving Range (Miles/Km) ^{††}	-	-	130 / 209
Electric Driving Efficiency (kWh per 100km)	-	-	11.5
CO ₂ Emissions (g/km) ^{***}	-	-	0

* Charging times for the high voltage battery may vary as it is dependent on the condition of the high voltage battery, charger specifications and ambient temperature.

† Kerb Weight defined as the total weight of a vehicle with standard equipment (the minimum figure and factory fitted optional equipment (the maximum figure) and all necessary operating consumables such as oils, coolant, air conditioning refrigerant and a full tank of fuel, while not loaded with either driver, passengers or cargo.

‡ Payload is the difference between the Gross Vehicle Weight and the Kerb Weight.

** Gross Vehicle Weight is the maximum allowable weight of the vehicle, fully loaded with passengers and cargo (The Payload) and includes the weight of the vehicle.

†† The Gross Train Weight is the weight of the fully loaded vehicle plus a fully loaded trailer and must not be exceeded.

‡‡ Our vehicles are homologated according to the current European legislation on the basis of the New European Driving Cycle (NEDC). The results of the tests are published for comparison purposes. Real fuel consumptions, emissions and electric range will be different and will vary according to driving conditions, driving styles, types of routes and the standard of maintenance of the vehicle.

*** g/km = grams of emitted substance per kilometre travelled. CO₂ = Carbon Dioxide.

IONIQ DIMENSIONS





Hyundai Finance

Hyundai Finance provides a range of products to make the purchase of your Hyundai even more accessible. To meet your requirements, our plans are simple but offer you the same quality and flexibility as your new Hyundai. Applying for a finance plan through your local Hyundai dealer is easy and they will support you in choosing the right plan for your needs.

As a customer your satisfaction is at the heart of our business, and whilst you are able to manage your account online, we are only a phone call away should you require any help or assistance. We offer two main products to assist your car purchase:

CONDITIONAL SALE

Conditional Sale is a simple and traditional way to finance your car over a fixed period. You decide to fund the entire purchase price or put down a deposit and as your interest rate is fixed you'll pay the same amount each month. After all repayments have been made you'll own the car.

PERSONAL CONTRACT PURCHASE (PCP)

Personal Contract Purchase could make it easier for you to get behind the wheel of your Hyundai, it may also help you to change your car on a more regular basis.

The way it works is simple, you decide what level of deposit to pay. From nil, up to a maximum of 50%. You also decide your repayment period (typically 25, 37 or 49 months) and set your anticipated annual mileage. This will determine your optional final payment.

You will then make fixed monthly repayments based on the outstanding balance and interest, less your optional final payment, and at the end of your monthly repayment period you will have three choices: return, retain or renew.

RETURN: you can hand the car back to us, with nothing further to pay (subject to fair wear and tear, and/or excess mileage charges may apply).

RETAIN: you can pay the optional final payment and the car is yours.

RENEW: you can part exchange the car, using any equity over and above the optional final payment as deposit on your next car (equity is anticipated, but this cannot be guaranteed).

T&Cs apply. Subject to status. Applicants must be 18 or over. Guarantee/Indemnity may be required. Hyundai Finance, RH1 1SR



5 Year Unlimited Mileage Warranty

The passion and belief we have in the quality of our products mean we can offer an aftercare package to match. Visit your local Hyundai Authorised Repairer and we'll attend to you straight away, giving you a fully-inclusive quote for the work you've requested.

Only Hyundai Trained Technicians will carry out this work, and we'll also check for any software updates to keep your car running smoothly. You can also be sure that we'll only use Hyundai Genuine Parts which have been thoroughly tested and approved. On collection, we'll explain your invoice and call you within 3 days of your appointment to check you're completely satisfied.

As the people who know your car best, the quality of our service is second to none.

5 YEAR UNLIMITED MILEAGE WARRANTY

A manufacturer backed, unlimited mileage, 5 Year Warranty* protects your Hyundai against manufacturing defects** and is fully transferable to the next owner.

5 YEAR ROADSIDE ASSISTANCE

24 hour roadside assistance should you ever need it, anywhere in the UK or Channel Islands.

5 YEAR ANNUAL VEHICLE HEALTH CHECKS

A free, expert visual inspection by your Hyundai dealer on key areas of your car, to help sort any problems and ensure trouble-free motoring.

ADDITIONAL AFTERCARE

A 12 year Anti-perforation warranty against perforation of the bodywork, from the inside of the panel outwards.

8 YEAR BATTERY WARRANTY

For peace-of-mind long into the future, you'll also receive an 8 year warranty on the high voltage battery of your IONIQ.

* Hyundai 5 Year Warranty subject to Terms and Conditions see website Hyundai.co.uk.

** Vehicles used for taxi or private hire are covered by a 5 year, 100,000 mile warranty. Cover excludes fair wear and tear.



Ownership

We're always thinking about how to make owning a Hyundai an enjoyable experience and that's exactly what you get with a Hyundai Fixed Price Service Plan. As a valued customer, we'll take care of all your Hyundai's scheduled servicing for up to 5 years or 50,000 miles.

Being covered by a Hyundai Fixed Price Service Plan means:

- Your Hyundai's servicing is covered in a single payment that can be included in your finance agreement
- You have a choice to cover your servicing for 3 or 5 years*
- Only trained Technicians will expertly assess and service your Hyundai
- Should any parts need replacing during your servicing, your Hyundai will be fitted with Hyundai Genuine Parts

For more information, simply contact your local Hyundai dealer or our Customer Services team, who will be happy to help.

* Price varies according to model, fuel type and mileage. Only available on vehicles registered on or after 1st March 2013. Price includes VAT where applicable. Time and mileage restrictions apply. Excludes seasonal checks. Terms and conditions apply.



Hyundai Click To Buy™

Hyundai Click To Buy™ is the smarter, easier way to purchase a new car. Innovation has always been part of our DNA, and now we've streamlined the buying process itself. With a few simple clicks you can trade-in your old car, configure your new Hyundai, arrange finance and pay a deposit — all from your computer, tablet or smartphone device.

For added flexibility you can pay in cash, and the delivery arrangements couldn't be simpler. You can choose to get it delivered at your home at a cost, or collect it in the evening or weekend from your local dealer.

You'll be admiring your Hyundai in double-quick time thanks to the latest example of our new thinking philosophy.



MyHyundai

MyHyundai is a complimentary and exclusive owners' club with a variety of unique benefits that'll make your ownership experience even more enjoyable.

As well as amazing offers that range from incredible getaways to indulgent gifts, you'll also be able to set your own alerts and preferences, while storing all your car's details in one, easily-accessible place.



Staying In Touch

We're committed to offering you the very best. That means, as well as delivering impressive cars, we'll also deliver helpful advice and service, every step of the way. Simply contact us on **0800 981 981** or visit our website at **www.hyundai.co.uk**



Keep up to date with our news on our Facebook page at **www.facebook.com/hyundaiuk**



See all our latest tweets at **www.twitter.com/hyundai_uk**



View our latest videos at **www.youtube.com/user/hyundaimotoruk**



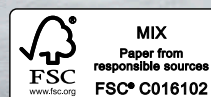
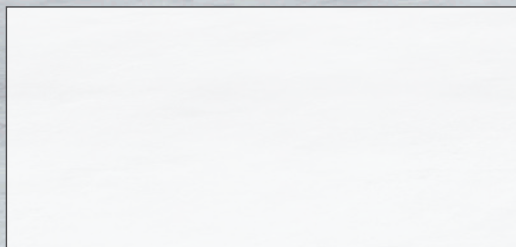
Make your IONIQ experience interactive by downloading our app, **IONIQ 3D**, which can be found on the App Store or Google Play

Specifications shown in this brochure are based upon the latest available information at the time of printing. The colours and finishes reproduced in this brochure are subject to the limitations of the printing process and may vary from the actual colour and paint finish.

In line with our policy of continual product improvement Hyundai Motor UK Ltd reserves the right to make changes at any time, without notice, to prices, colours, material, design, shape, specifications and models, and to discontinue items. For the latest details, please consult your Hyundai dealer.



Your local Hyundai dealer:



This brochure is printed on FSC® (Forestry Stewardship Council) certified paper which has been produced at a mill and printed by a printer that has been certified to the ISO 14001 environmental standard using vegetable oil based inks and aqueous based coatings. It can be disposed of by recycling, incineration for recovery or is biodegradable.

Customer enquiries: 0800 981 981

Model on front cover: IONIQ Hybrid Premium SE with optional 17" alloy wheels in Polar White solid paint. HB2479 03/17



Hyundai Motor UK Ltd
728 London Road, High Wycombe, Bucks HP11 1HE
T: 01494 428600 F: 01494 428699 www.hyundai.co.uk

IONIQ Price Guide

April 2017

	FUEL TYPE	CO ₂ EMISSIONS G/KM	INSURANCE GROUP (1-50)	VED FIRST YEAR COST (£)	BASIC RETAIL PRICE (£)	VAT (£)	RETAIL PRICE (£)	RECOMMENDED ON THE ROAD PRICE (£)	P11D VALUE (£)	BIK TAX % 2017-2018
IONIQ Hybrid										
Hybrid SE 1.6 GDi	P	79	10E	90.00	16,546.67	3,309.33	19,856.00	20,585.00	20,440.00	17
Hybrid Premium 1.6 GDi	P	79	10E	90.00	18,046.67	3,609.33	21,656.00	22,385.00	22,240.00	17
Hybrid Premium SE 1.6 GDi	P	79	11E	90.00	19,546.67	3,909.33	23,456.00	24,185.00	24,040.00	17

	FUEL TYPE	CO ₂ EMISSIONS G/KM	INSURANCE GROUP (1-50)	VED FIRST YEAR COST (£)	BASIC RETAIL PRICE (£)	VAT (£)	RETAIL PRICE (£)	RECOMMENDED ON THE ROAD PRICE (£)	RECOMMENDED ON THE ROAD PRICE (PLUG IN CAR GRANT*)	P11D VALUE† (£)	BIK TAX % 2017-2018
IONIQ Electric											
Electric Premium 28 kWh	N/A	0	16E	0.00	24,046.67	4,809.33	28,856.00	29,495.00	24,995.00	29,440.00	9
Electric Premium SE 28 kWh	N/A	0	17E	0.00	25,546.67	5,109.33	30,656.00	31,295.00	26,795.00	31,240.00	9

Optional Extras											
Metallic / Pearl Paint					470.83	94.17	565.00				
17" Alloy Wheels*					333.33	66.67	400.00				
POD Point 7 kW Home Charger**					250.00	50.00	300.00				

Hyundai Sense Service Plans											
Affordable Hyundai service plans are available across the range. Please ask your local dealer for details††											

* Including £4,500 plug in car grant.

† Excluding £4,500 plug in car grant.

‡ 17" alloy wheels will increase the CO2 emissions to 92g/km and will affect the mpg figures. Please check website for technical details.

** POD Point Home Charger price includes installation and £500 (including VAT) of OLEV support. Additional installation costs may apply for non standard installations.

†† With the exceptions of the iLoad and i800, any current Hyundai vehicle registered in the UK is eligible provided that it is less than 13 months old and has yet to undergo its first service.

‡‡ Please contact your dealer for the latest list of compatible mobile phones.

*** IONIQ Electric offers a tyre repair kit instead of an emergency spare wheel.

††† LIVE Services includes a 7 year subscription. A compatible smartphone with data plan required to activate services. Please contact your dealer for full details. Hyundai's Mapcare includes a map update every year until your car's 10th anniversary.

All prices are in Great British Pounds and are correct at time of print. For full specifications and features please check with your local dealer or visit www.hyundai.co.uk.



IONIQ Model Details

April 2017

SE

SE offers the following features as standard:

- 15" Alloy Wheels with Aerodynamic Wheel Trims
- Air Conditioning - Dual Zone Climate Control
- Automatic Headlights with Dusk Sensor
- Autonomous Emergency Braking (AEB)
- Bluetooth® Connectivity**
- Cruise Control - Smart Adaptive Speed Control
- Driver's Seat Lumbar Support (Electric)
- Driver's Seat Manual Adjustments
- Driver's Supervision Instrument Cluster with TFT Display (4.2")
- Front Passenger Seat Height Adjustment
- Hill-start Assist Control (HAC)
- Lane Departure Warning System with Lane Keep Assist (LKAS)
- Leather Wrapped Steering Wheel
- Parking Sensors - Rear
- Parking System - Rear Camera and Guidance System
- Radio, RDS, DAB
- Spare Wheel - Emergency Space Saver (Steel)***
- Speakers - 2 Tweeters, 2 Front, 2 Rear
- Touchscreen Media Centre (5")
- Tyre Pressure Monitoring System (TPMS) with Individual Tyre Pressure Display
- USB and Aux Connections - Front

Premium

Premium offers the following features over SE:

- Automatic Dimming Rear View Mirror
- Door Mirror Puddle Lights
- Door Mirrors - Automatic Power Folding
- Door Scuff - Chrome with IONIQ logo
- Driver's Seat - Heated
- Driver's Supervision Instrument Cluster with TFT Display (7")
- Exterior Door Handles - Chrome Effect
- Front Passenger's Seat - Heated
- Headlight - Bi-Xenon
- Interior Door Handles - Chrome Effect
- Phone Connection - Android™ Auto and Apple CarPlay™**
- Positioning Lights - C Shape LED
- Rear Air Vents - Centre Console
- Rear Light - LED
- Smart Key - Keyless Entry with Engine Start/Stop Button
- Speakers - Upgraded Infinity Sound System - 1 Centre, 2 Tweeters, 2 Front, 2 Rear, 1 Subwoofer and 1 Ext Amp
- Steering Wheel - Heated
- Touchscreen Satellite Navigation (8") including Traffic Messaging Channel, MapCare and LIVE Services***
- USB - Driver's Arm Rest (Charging Only)
- Window Surround - Chrome Finish
- Wireless Phone Charging Pad

Premium

Premium SE offers the following features over Premium:

- Alloy Pedals
- Automatic Windscreen Wipers with Rain Sensor
- Blind Spot Detection System (BSD)
- Driver's Seat - Ventilated
- Driver's Seat Electric Adjustments
- Driver's Seat Memory Function
- Front Passenger's Seat - Ventilated
- Leather Effect Glove Box
- Parking Sensors - Front and Rear
- Rear Cross Traffic Alert (RCTA)
- Rear Seats (Outer) - Heated
- Seat Trim - Leather - Seat Facings Only

The following features are specific to IONIQ Electric:

- 16" Alloy Wheels
- Air Conditioning - Single Zone Climate Control
- Automatic Windscreen Wipers with Rain Sensor
- CCS Combo Rapid Charge Port (50KW)
- Charging Cable - Emergency 3 Pin Connector (ICCB)
- Cruise Control - Smart Adaptive Speed Control with Stop and Go
- Headlight - LED
- Regenerative Brake Shift Paddles